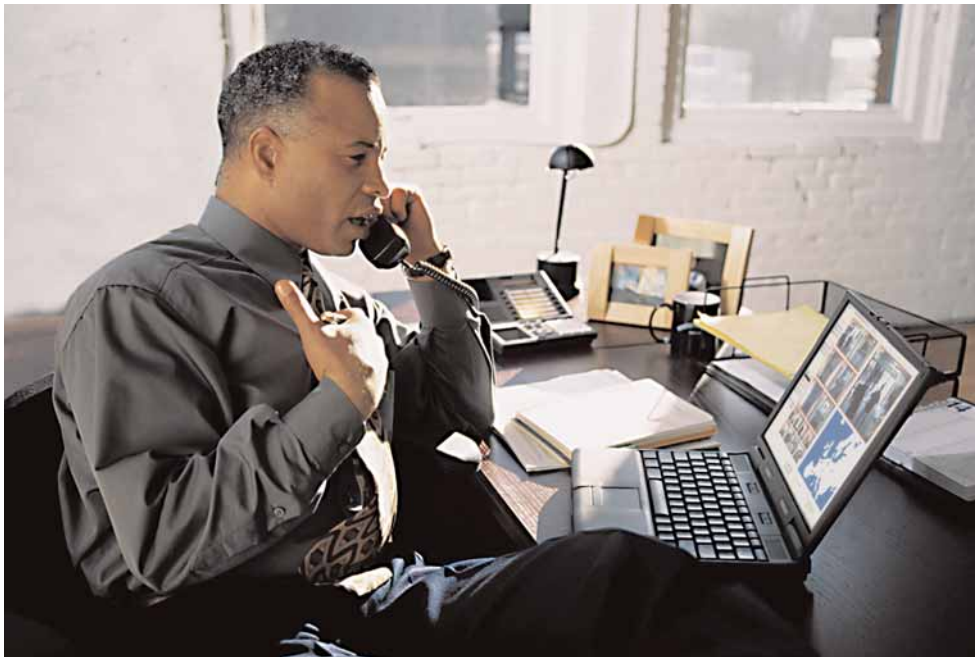




## IMZ-RS SERIES

# REALSHOT™ MANAGER SOFTWARE



With a range of innovative network-ready products, Sony has already opened up a whole world of networked video monitoring applications. Sony RealShot Manager software builds on this experience and allows professionals in many fields – security, industry, medical, process and quality control, retail, human resources – to build a powerful multi-camera video monitoring system running over a computer network. This can bring a host of benefits ranging from safety improvements, better-managed inventory, reduced loss and shrinkage to reduced cost of (network) ownership.

### What is RealShot Manager software ?

Developed by Sony for video monitoring over IP (Internet Protocol), it greatly expands the capabilities of a company's network monitoring system and makes it easier than ever to manage and administer a complete digital video system.

With the installation of RealShot Manager software, a PC becomes an advanced yet simple-to-operate "command centre" for Sony video network cameras and servers – enabling and facilitating remote control, monitoring and recording of up to 32 video cameras.

### Expand your network monitoring system

RealShot Manager software allows existing video networked surveillance systems to be expanded, both quickly and at low cost, by adding extra video network devices such as cameras and file servers.

Depending on network infrastructure, it can be set up as an individual control station for local monitoring and recording – and simultaneously act as a building block for a centralised IP-based video surveillance system connecting multiple sites.

CHANGING

THE WAY

BUSINESS

COMMUNICATES

# Features of RealShot Manager software

## Customised layouts

RealShot Manager software's intuitive and user-friendly interface can be personalised in order to match your own requirements and preferences. This powerful feature – the "Layout Editor" – creates customised site layouts and allows you to insert backgrounds (e.g. a floor plan), icons (which can be linked to a specific camera or monitor) and even company logos.

"Action areas" can be created and used to switch to a new layout, for example to zoom in on another area such as a different wing of an office building or the opposite platform of a railway station. Monitoring windows can be added and scaled for the layout that suits you best.

## Flexible recording

RealShot Manager software is the ultimate choice for those networked surveillance applications where it's vital to have an accurate, dependable record of what's been happening. It is unique because of its flexible recording modes which include Manual, Scheduled and Alarm/Pre-alarm recording. Thanks to this software, video images can now be recorded using a networked video surveillance system.

## Manual recording

A privileged operator can start a recording at any time for any selected camera. The camera then records at a defined refresh rate resolution and quality.

## Scheduled recording

This mode schedules recording for any selected camera or group of

cameras. There is virtually no limit to the number of scheduled items, so you can record the detail you want, when you want, by adjusting refresh rate resolution and quality.

## Alarm and pre-alarm recording

Alarm sensors can be configured either per camera or camera group and set up to be active in the schedule to record more detail at the time an alarm sensor is triggered.

## Search recording

The Search Recording GUI (Graphical User Interface) makes it quick and easy to retrieve a recording. The calendar displays all recordings made (per camera or camera group) so you can see when and what kind of recording was made and filter this for the time/date, alarm events and inserted comments. Preview images (thumbnails) can also be displayed to make the search even easier and more effective.

## Playback during recording

Recording and playback can be performed simultaneously, so previously recorded images can be viewed while continuing to record.

## Camera Manager

The Camera Manager helps you to fine-tune your digital video system according to your needs and available bandwidth. Each individual camera can be added to a specific group and configured for optimal performance by setting default refresh rate, resolution and quality.

## Other Features

### Time-stamped comments

Operators can log events in case anything notable occurs by editing a comment during monitoring. Comments can be linked to a camera with a given priority and logged with a time stamp for easy logging.

### User privileges

Sophisticated security functions are incorporated in order to manage multiple users. The administrator can define user groups, add users, set privileges per user/group and set up user access to specific camera groups.

### Customised logging reports

In the event of a problem, the logging window makes it easy to determine the cause. By selecting the items you want to monitor, trouble-shooting is made easy.

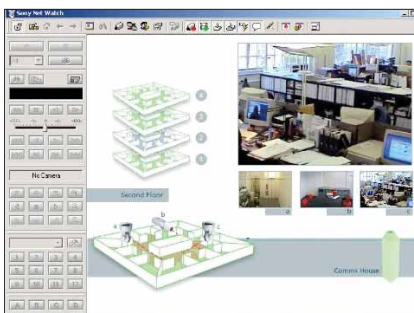
### Action Editor

Operators can create customised actions upon alarm trigger, such as selecting a camera, change camera preset, switch layout and control alarm output.

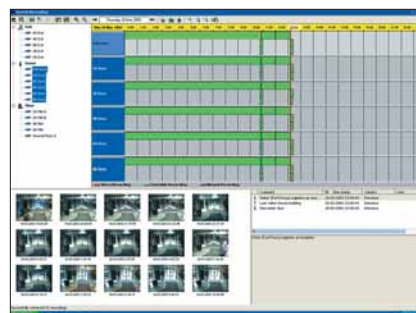
### Activity Detection

RealShot Manager software supports the Camera (SNC-RZ30P/Z20P/CS3P) embedded activity detection for more efficient monitoring and recording.

"Layout Editor": customised layout



Search recording



Scheduled recording



## Tailor-made RealShot solutions

Standard RealShot Manager software packages are designed for surveillance systems of up to 32 cameras. From very early on in its development, however, we took into consideration and catered for the demands of larger, more complex and more challenging environments.

Whether it's for airport security or city centre surveillance, Sony can be consulted to evaluate your requirements and design a bespoke RealShot solution for each unique application. Several customers (corporate, city councils, institutions, etc) in Europe have already relied on our expertise and experience to customise RealShot Manager software to their own specific and unique needs.

## RealShot Manager software standard packages

Four different versions of RealShot Manager software are available to match the various requirements and configurations of small to medium-sized installations.

- **IMZ-RS104**  
Control PC software for up to 4 networked video sources
- **IMZ-RS109**  
Control PC software for up to 9 networked video sources
- **IMZ-RS116**  
Control PC software for up to 16 networked video sources
- **IMZ-RS132**  
Control PC software for up to 32 networked video sources

## Operating system requirements

Windows® 2000, Windows® XP or Windows® NT Workstation

## Minimum PC requirements

Processor Pentium® IV – 2.4 GHz or higher

Memory 256 MB RAM minimum

Video card Supporting 1024 x 768 at 16/24bit colour depth

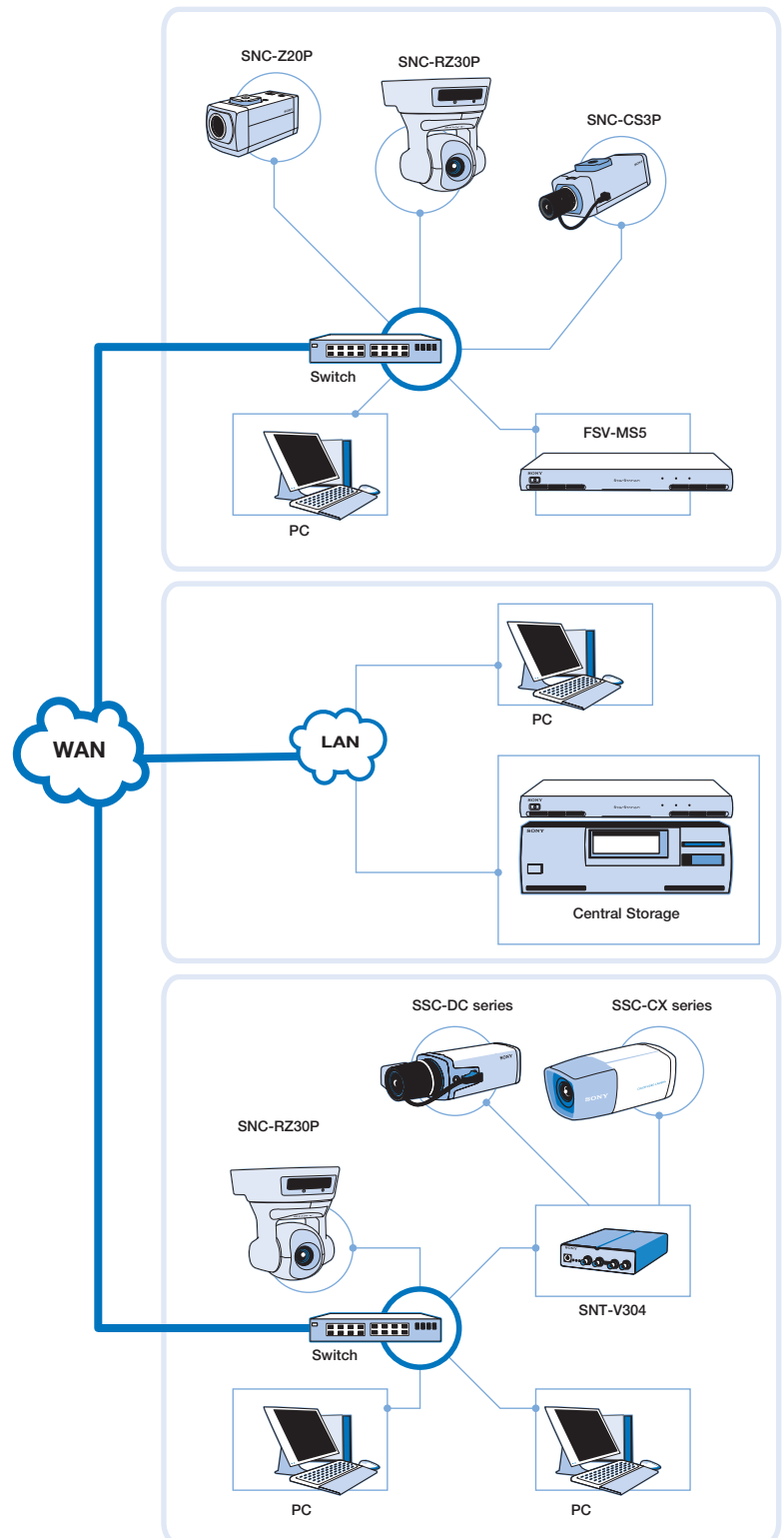
Network Interface card Ethernet 100Base-T Network Interface

Sufficient video storage (local PC hard disk or Network Attached Storage)

## Client Software

Optional Client software allows monitoring of multiple sites from a central location in case of client-server architecture.

## Typical system



## PrimeSupport

A one-year PrimeSupport telephone helpline is included with every RealShot Manager software package. Available during working hours from Monday to Friday, this toll free service\* will put you in touch with our trained engineers to help you with any aspect of the software functionality.

\* Registration of your PrimeSupport contract is required before services can be provided.

## A new generation

By embedding IP functionality within equipment such as video cameras and video servers, Sony is creating a new generation of products that can be connected to any public or private network – LANs and WANs (Local and Wide Area Networks). What Sony RealShot Manager software does is to establish a management platform for monitoring and recording these networked video devices. Here are some examples of this new generation of products from Sony.

### Video network cameras



Sony has a line-up of both fixed and pan-tilt-zoom video network cameras that can be remotely monitored and controlled over LANs and WANs.

### Surveillance video cameras



Sony has a comprehensive range of surveillance video cameras which incorporate innovative features and state-of-the-art technology. With a wide variety of camera sensitivity, lenses and designs, there's a model for every environment and application.

### Video server



The SNT-V304 Netstation enables remote monitoring and control of analogue video cameras over LANs, WANs and the Internet.

### File and applications servers



Sony NAS (Network Attached Storage) solutions add extra disk capacity to your network almost instantaneously and allow data to be shared with all network users quickly and easily. Adding new hard drives to an office server can often mean inconvenient downtime, but Sony network file servers simply install onto your network without disrupting any users.

### Desktops and laptops



Sony has a comprehensive line up of laptop and desktop computers, including the Vaio range, to match specific requirements.

Sony address/contact details/dealer stamp

**SONY**

[www.sonybiz.net](http://www.sonybiz.net)

SONY BUSINESS EUROPE

Sony is a registered trademark of the Sony Corporation, Japan. Design, features and specifications are subject to change without notice. RealShot and PrimeSupport are trademarks of Sony Corporation.

All non-metric weights and measures are approximate. All other trademarks are the property of their respective owners.

IMZ-RS Series/GB-15/12/2003