

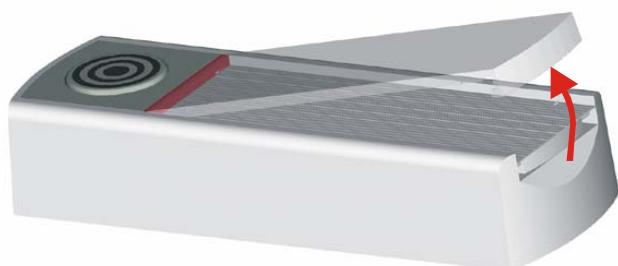
The RC-89 wireless doorbell button

The RC-89 is a component of Jablotron's Oasis 80 alarm system. It can be used as a wireless doorbell button or to trigger a panic alarm or to operate various electrical appliances. The battery-powered button communicates via OASIS radio protocol.

Installation

The button should not be installed on or near metal objects which block radio communication.

- Gently open the transparent cover (see the below picture)
- Partially unscrew the screw that was located under the cover, stopping before it falls out.
- Push the screw in with a screwdriver until the back cover falls out
- Install the back cover onto the desired location
- Put the button unit onto the rear cover and re-tighten the screw
- Put the required name onto the paper slip and replace the transparent cover
- Enroll the button to its designated receiver (e.g. wireless siren JA-80L)



Using the RC-89 as a doorbell button

If the RC-89 is to serve as a wireless doorbell button, it has to be enrolled to a JA-80L wireless indoor siren as follows:

1. Plug the siren into a mains socket.
2. After the siren's indicator turns on, press and hold the JA-80L button until the indicator starts to flash (enrollment mode).
3. Press the RC-89 button – a doorbell sound is then heard (by pressing the button repeatedly you can scroll through the 8 possible melodies).
4. To exit enrollment mode, press the button on the JA-80L whose indicator will then turn off.

Using the RC-89 as a panic button

The RC-89 can be enrolled to an Oasis control panel as a panic button as follows:

1. Switch the control panel to service mode and key in 1 to enter enrollment mode. Select the desired address using arrow keys.
2. Press and hold the RC-89 button until you see three quick flashes.
3. The button enrolls to the control panel during these three flashes.
4. Exit enrollment mode by keying in # on the Oasis keypad.

Notes:

- The natural reaction of the RC-89 is a panic alarm. A different reaction can be programmed in the control panel if desired.
- If the RC-89 is physically removed from the system, the control panel (CP) will not be automatically aware of this change as the RC-89 does not signal this event to the CP or check communication with the CP either. According to EU standards, the RC-89 may be used as a portable panic button, but it should not be permanently fixed. If a fixed secured panic button is required which conforms to EU standards, we recommend using the RC-88 in panic button mode.
- An alternative way of enrolling the RC-89 to a control panel is to insert its battery.

Testing the panic button

The signals received by the control panel from the RC-89 can be checked and measured (see control panel manual for details).

Controlling electrical appliances

The RC-89 can also be used with other Jablotron products which communicate via Oasis radio protocol, e.g. relay receiving modules series UC-8x and AC-8x (see the manuals of these particular products for details).

The RC-89 transmits the same kind of signal as transmitted when a pair of buttons are pressed on an RC-80 keyfob.

The RC-89 can be enrolled to several receivers at once, e.g. if someone rings the door bell, the JA-80L indoor siren could react by making a sound, and a light at the door could be turned on by an AC-82 relay receiver.

Battery replacement

If the RC-89 stops working, replace its battery. To open the unit, unscrew the screw under the transparent cover.

Expired batteries should not be thrown into the garbage, but disposed of according to local regulations.

Protective roof

A protective roof-like housing is supplied with the package, enabling the button to be protected against climatic factors. You can perform installation by putting the button's little alignment bumps into holes on the roof unit and screwing both parts together on the wall.

Be careful not to use too much force while handling the transparent cover. If the cover has to be removed it is advisable to use a tool to grab the jutting out part of the cover and pull it up.



Technical specifications

Power supply	alkaline battery type L1016 (6.0 V)
Typical battery lifetime:	approx. 2 years (can be shorter outside)
Communication band	868 MHz, Oasis protocol
Communication range	approx. 50 m (open area)
Environment according to EN 50131-1	Class III outdoor-sheltered
Housing	IP-41
Operational temperature	-25 to +50 °C
Relative air humidity	25 to 75%
Operational conditions	ERC REC 70-03
The RC-89 complies with ETSI EN 300220, EN 55022, EN 50130-4, EN 50134-2, EN 60950	

FCC ID VL6RC89



Jablotron Ltd. hereby declares that the RC-89 is in compliance with the essential requirements and other relevant provisions of Directive 1999/5/EC and complies with part 15 of the FCC rules. Operation is subject to the following two conditions: 1. This device may not cause harmful interference, and 2. This device must accept any interference received, including interference that may cause undesired operation.

CAUTION: Changes or modifications not expressly approved by Jablotron could void the user's authority to operate the equipment. The original of the conformity assessment can be found at www.jablotron.com, Technical Support section.



Note: Although this product does not contain any harmful materials we suggest you return the product to the dealer or directly to the producer after use.



Jablotron Ltd., Pod Skalkou 33
466 01 Jablonec nad Nisou
Czech Republic
Tel.: +420 483 559 911
fax: +420 483 559 993
Internet: www.jablotron.com